

# BIKE & PEDESTRIAN MASTER PLAN

## COLLINGSWOOD AND HADDON TOWNSHIP

# COMMUNITY MEETING

JANUARY 25, 2020



PROJECT TEAM

**AECOM**



# WELCOME!

## PURPOSE OF THE MEETING

We want your help developing a bicycle and pedestrian plan within Collingswood and Haddon Township that balances the needs of everyone — pedestrians, bicyclists, public transit riders, drivers, people with disabilities, seniors, and children.



That's my son learning to ride in Knight Park

# WHY DO A PLAN FOR PEDESTRIANS?

- It is planning for everyone
- No matter what mode you use to go about your day, all of you are pedestrians at some point



# WHY DO A PLAN FOR BICYCLISTS?

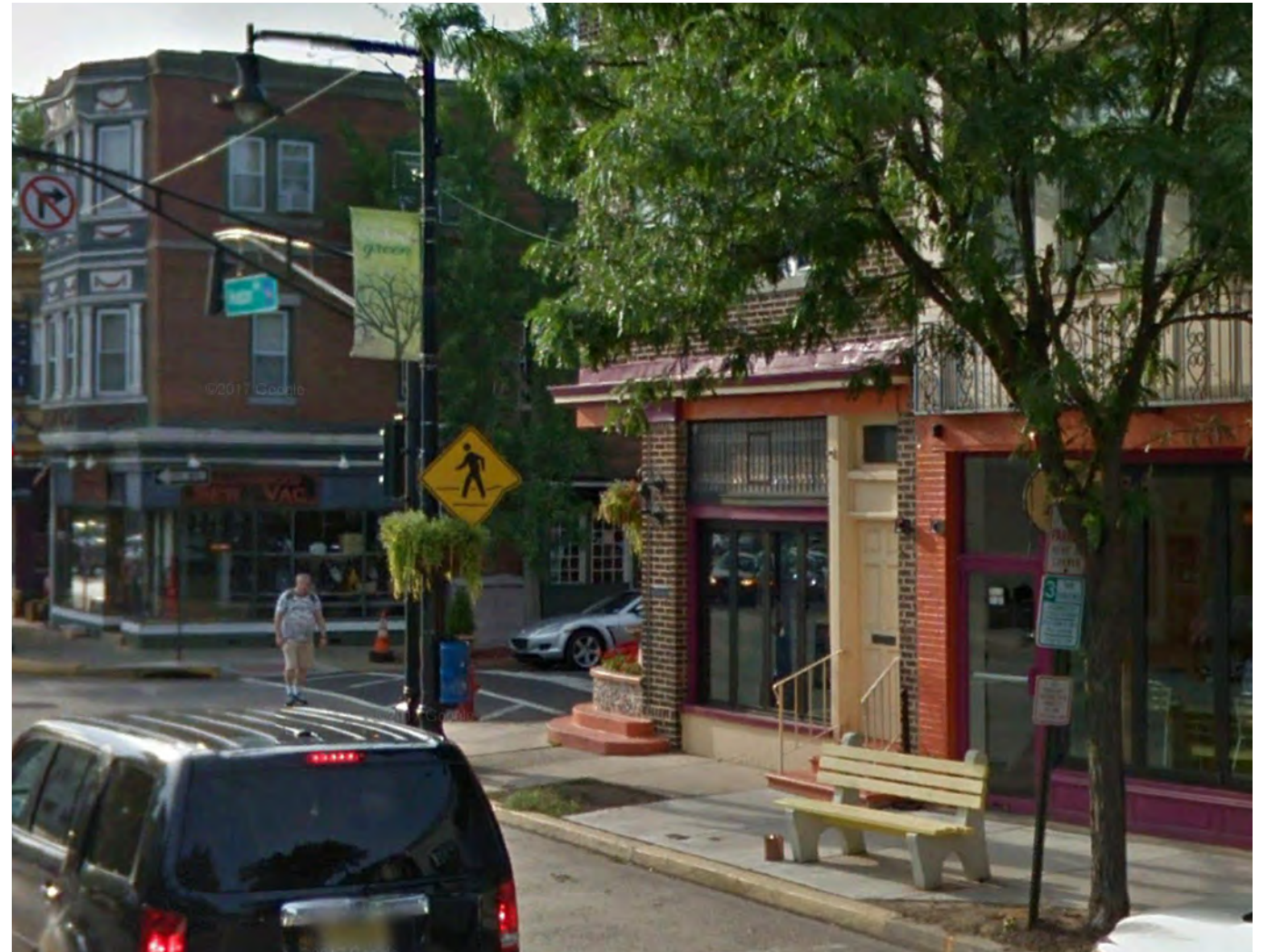
- Biking can be a quick and convenient way to go places
- There is a growing network of trails and places to go on a bike in the region



# HOW DID WE GET HERE?

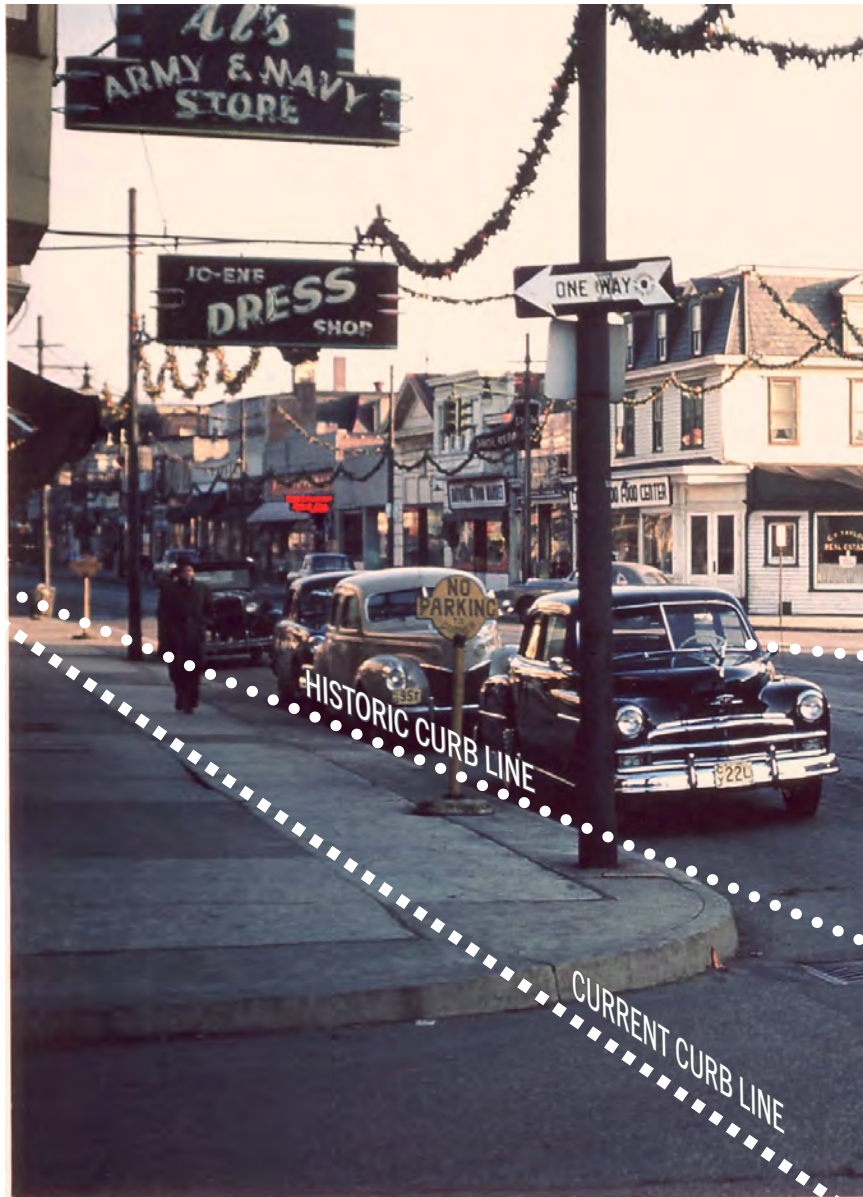


VIEW CIRCA 1940

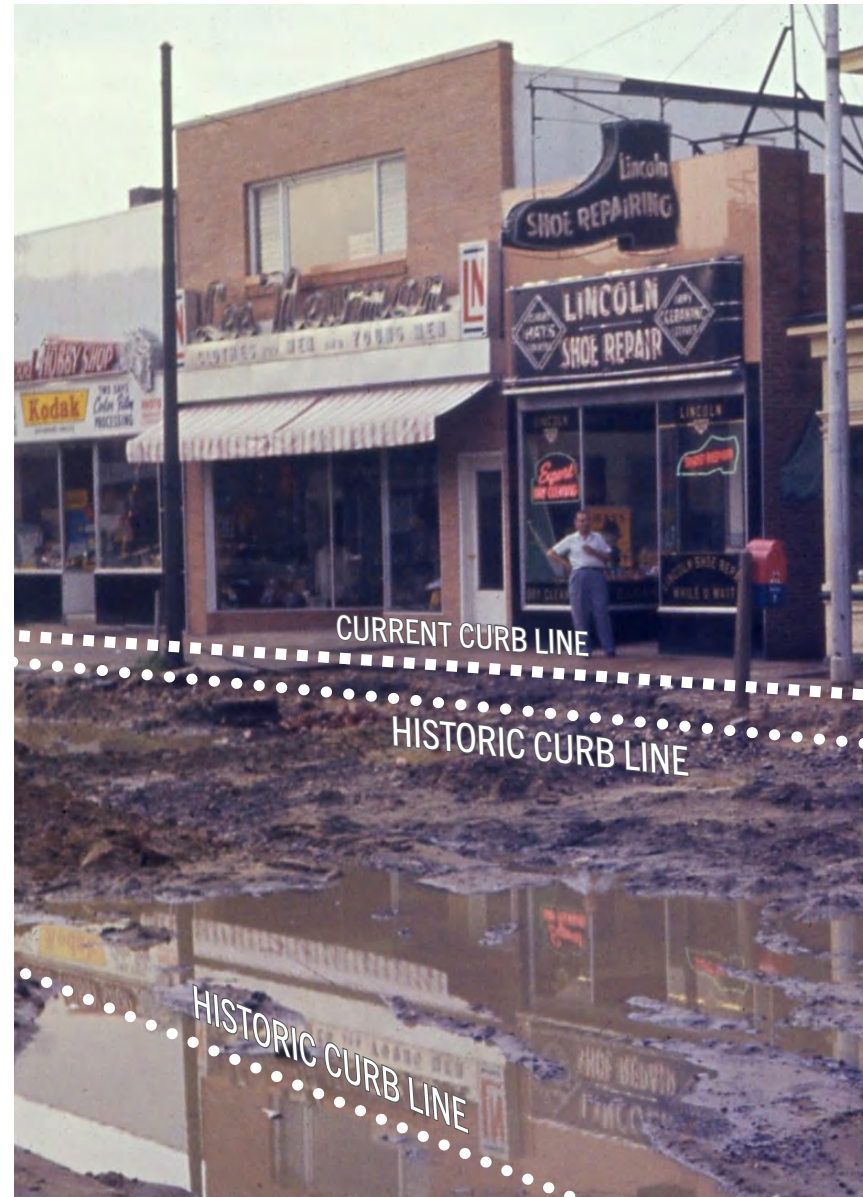


PRESENT DAY VIEW

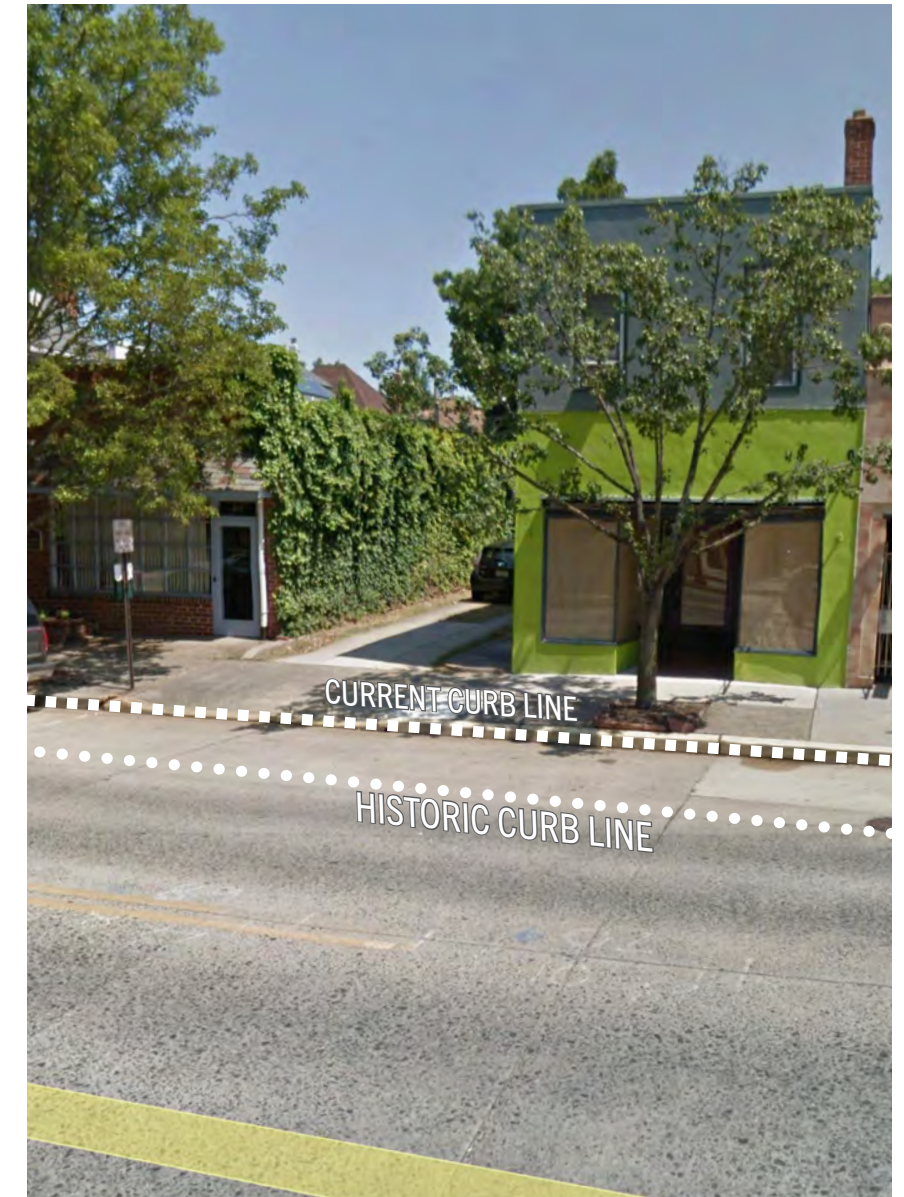
NORTHEAST CORNER OF HADDON AVE AND COLLINGS AVE



VIEW CIRCA 1938



VIEW UNDER CONSTRUCTION



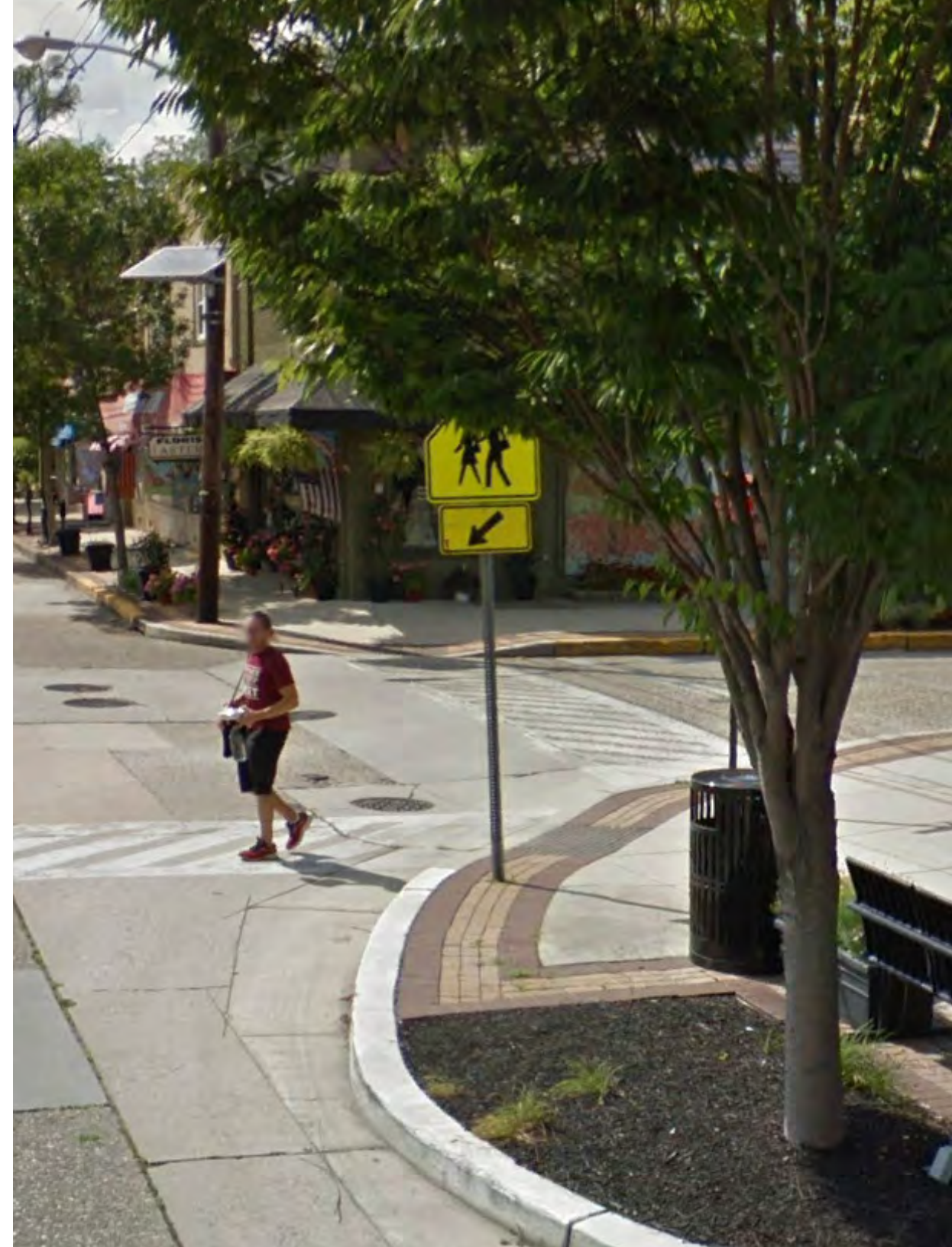
PRESENT DAY VIEW

## 1959 WIDENING OF HADDON AVE

# INITIAL OBSERVATIONS

## WALKING

- Both towns have a pre-automobile fabric, built at the time when most people walked to their destinations.
- Haddon Avenue is a strong retail corridor, forming the spine of both lively suburban downtowns.



# INITIAL OBSERVATIONS

## WALKING

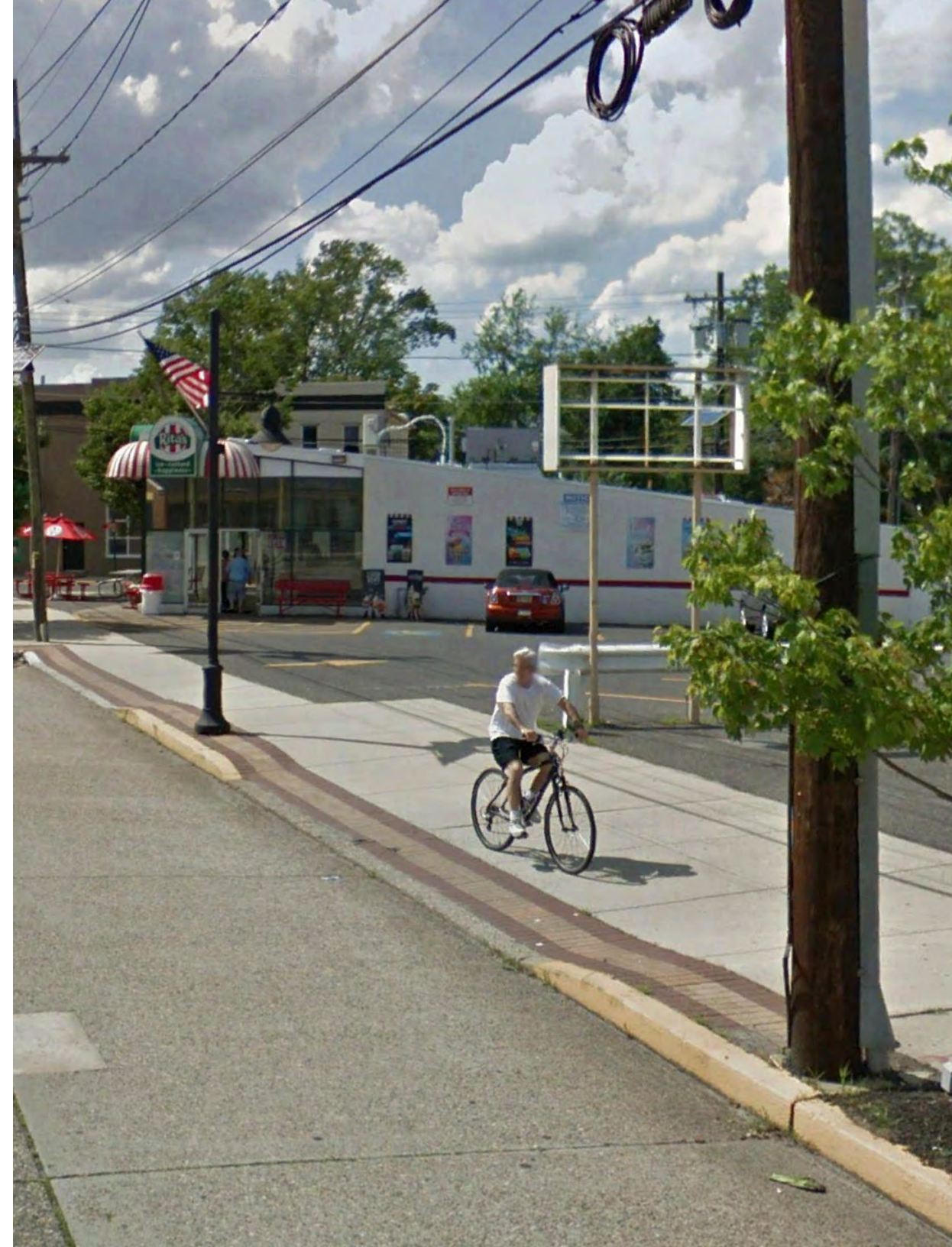
- PATCO stations are well-placed for walking, but surrounded by infrastructure designed primarily for 'park and riders.'
- Walking infrastructure is mostly present throughout the towns, but its condition varies.



# INITIAL OBSERVATIONS

## BIKING

- Ample parks and waterways create appealing opportunities for recreational cycling.
- Bicycling infrastructure is scarce, and where it exists, it is almost exclusively intended for recreation.



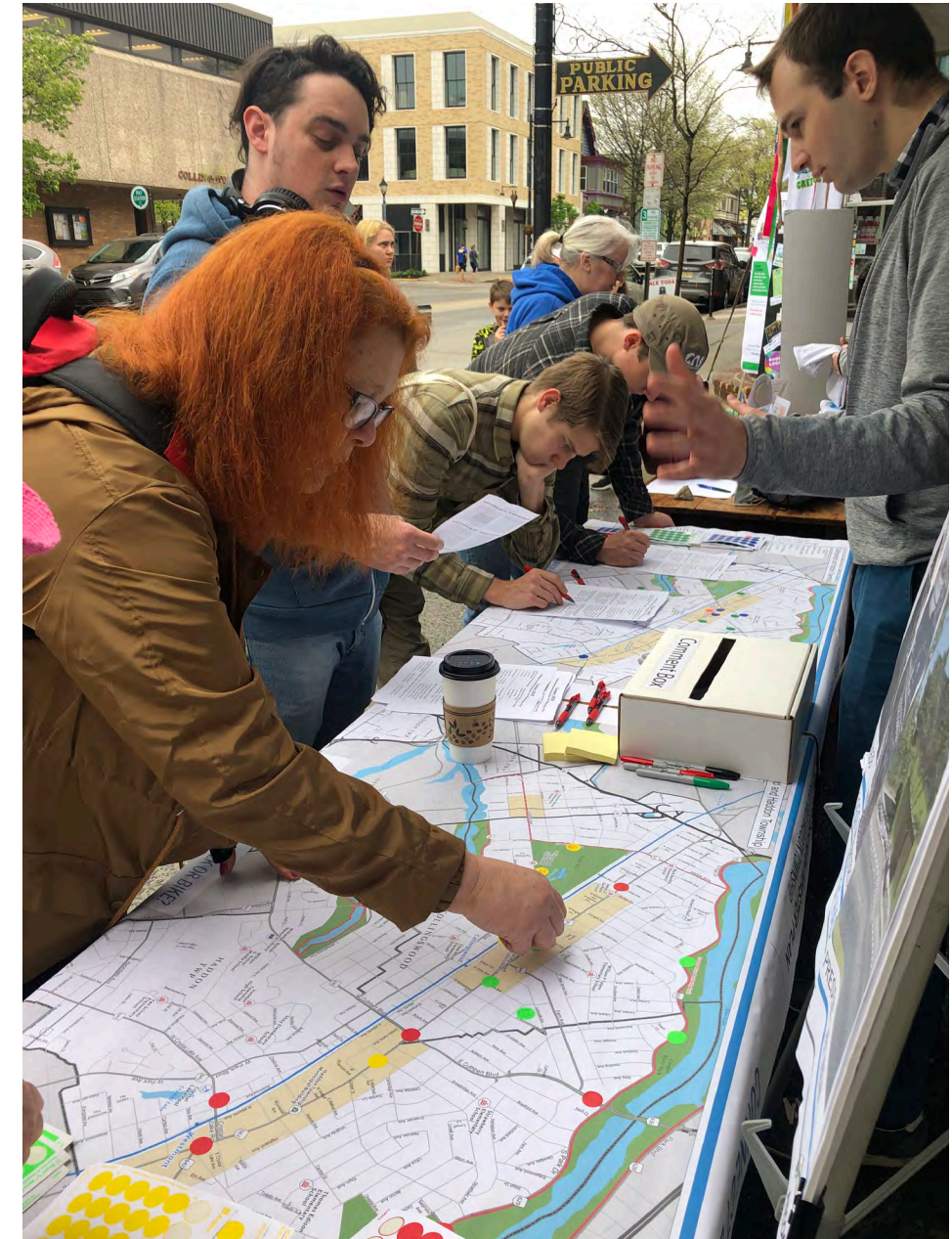
# INITIAL OBSERVATIONS

## BIKING

- Lack of on-street infrastructure makes it difficult to cycle for transportation.
- Availability of bicycle parking is a relative strength.
- Collingswood Bike Share

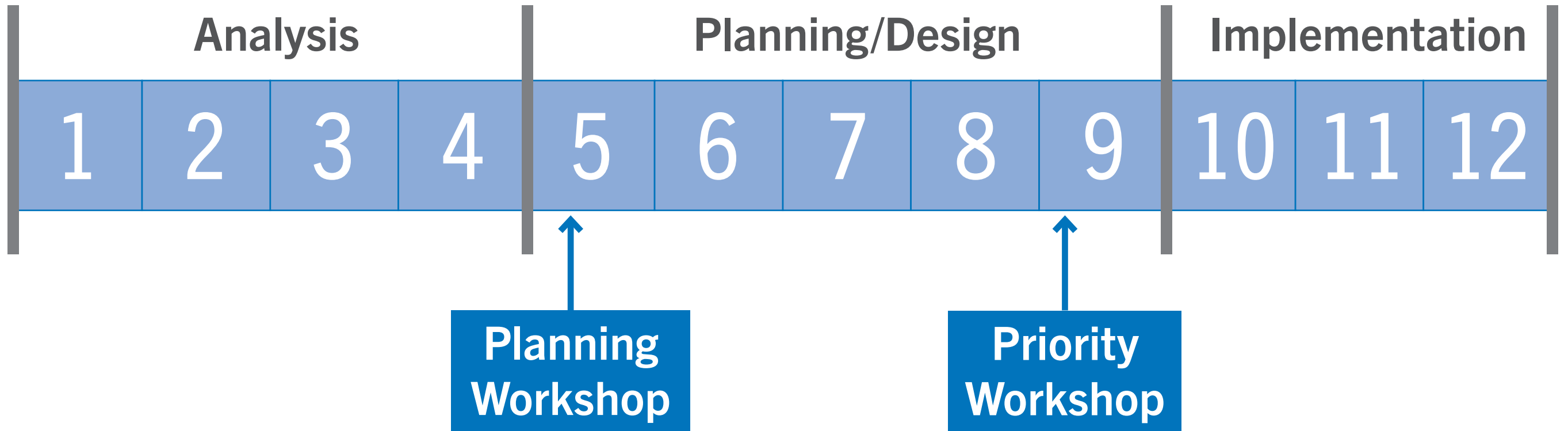


# INITIAL FEEDBACK - GREEN FESTIVALS



# PROJECT SCHEDULE

- Created a Website with Survey and Interactive Map
- Finishing Existing Conditions / Data Collection
- Continue Stakeholder Interviews
- Return to the Public by the Summer



# TODAY'S MEETING

- Visit the boards around the room
- Provide comments and feedback
- If you have questions please find anyone with a nametag!

## CONTACT INFO:

**Douglas Robbins, AICP, PP**

AECOM

douglas.robbins@aecom.com

215-789-2082